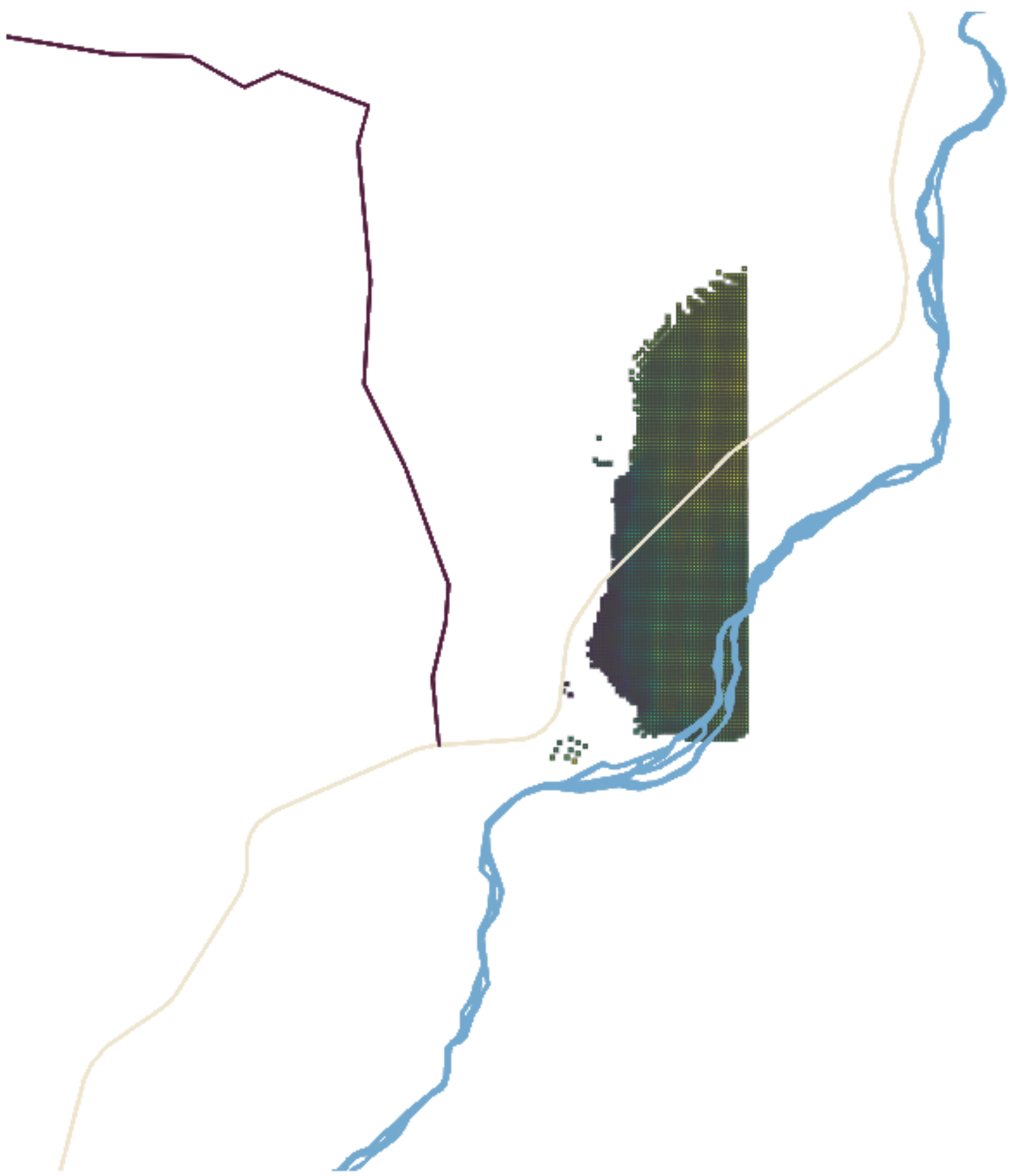


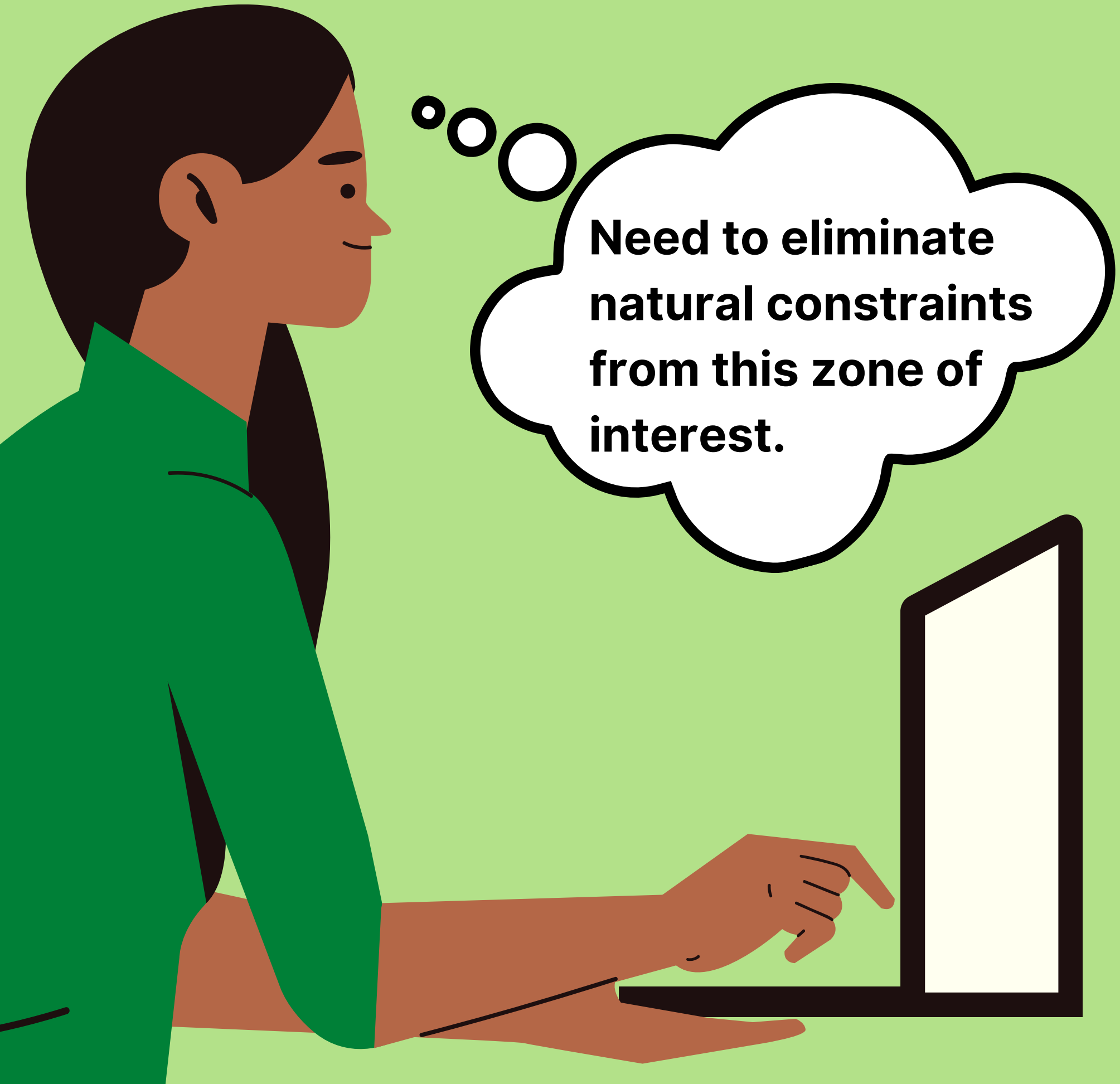
INTRODUCTION TO GEOLIME

GIS Selection & Polygon Exclusion



DEEPLIME





**Need to eliminate
natural constraints
from this zone of
interest.**

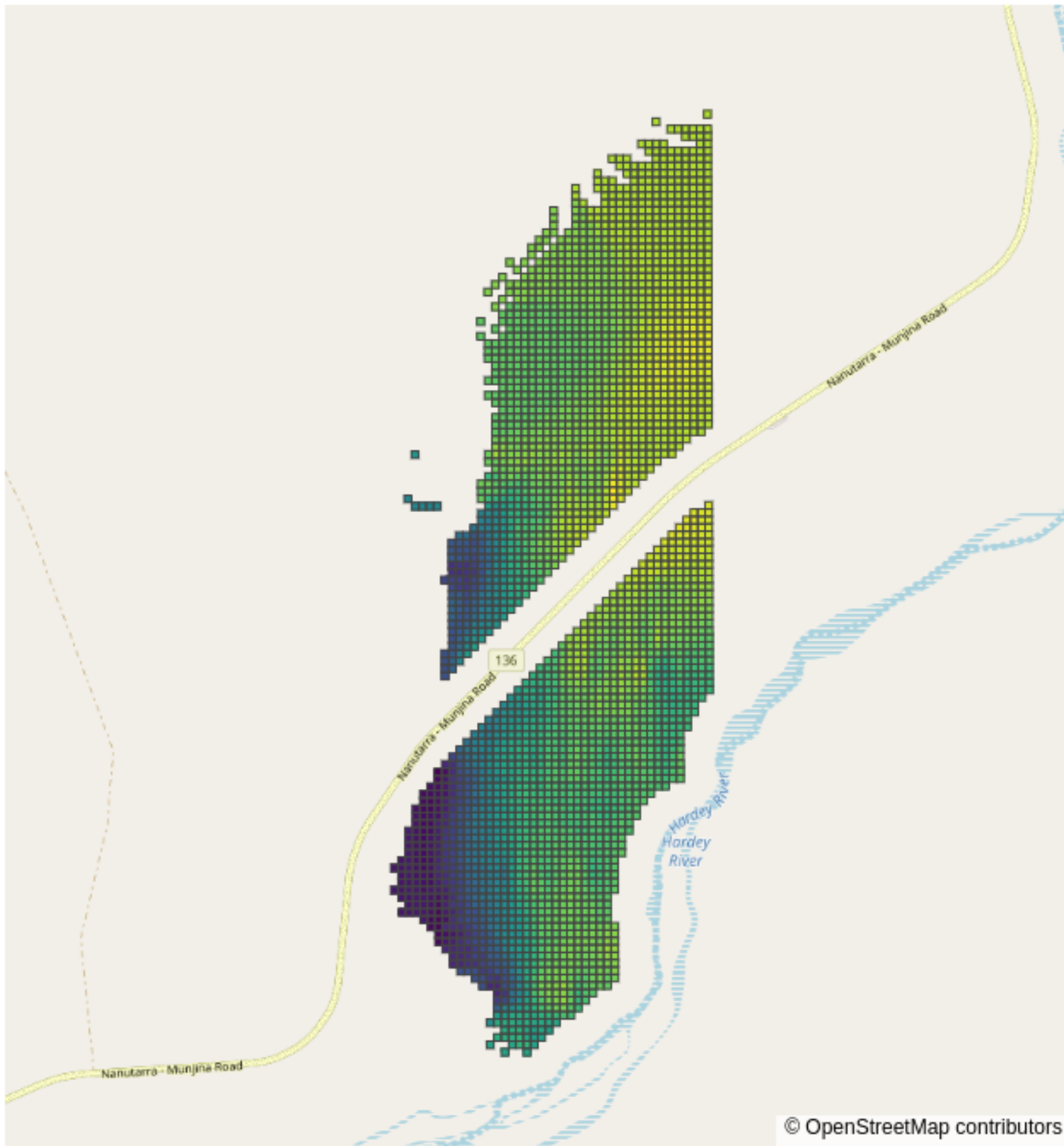


```
geo.select_points_inside_polygon(  
    gis_object=hardey_river,  
    object_to_select=block_model,  
    property_name='in_river'  
)
```

```
geo.select_points_inside_polygon(  
    gis_object=highway_road,  
    object_to_select=block_model,  
    property_name='in_road'  
)
```

```
block_model.delete_cells('in_river')
```

```
block_model.delete_cells('in_road')
```



Fe_kriged mean



© OpenStreetMap contributors

HOW EASY WAS THAT?

Check our
documentation for
more examples,
and let's rock!



DEEPLIME